

PURLINE organic flooring | wineo 1200 Installation instructions plank for gluing



PURLINE organic flooring wineo 1200 plank for gluing is a high-quality polyurethane flooring intended for interior use only. It is based on ecuran, a high-performance composite material made predominantly from vegetable oils such as rapeseed or castor oil and naturally occurring mineral components such as chalk.

Please note that polyurethane flooring is a separate product category from vinyl flooring according to EN 16776 and is thus installed with different installation techniques when compared with vinyl flooring. For this reason care must be taken to read, understand and follow the entire installation instructions. Pressure sensitive adhesives can NOT be used, rather only adhesives used with the “wet set” installation method are permitted using an adhesive approved by Wineo. For more information, please refer to the technical specifications in our product collections.

Important general information:

Before processing, make sure that the delivered goods are in perfect condition. Goods that have been cut to size or laid are not subject to complaint. Before installation, the goods must be checked for colour and batch uniformity. Only install planks/tiles of the same batch in one room.

The relevant national standards, guidelines and regulations, together with the technical documents and generally acknowledged rules of the trade, apply when installing **PURLINE organic flooring wineo 1200 plank for gluing**.

For interior use only! Installation in 3 season rooms or unheated interior areas such as cabins or RV's & motorhomes require the use of an adhesive designed for extreme temperature ranges such as a 2 component polyurethane flooring adhesive. Contact Wineo technical support for advice on adhesive selection in such installations.

Notice:

The flooring installer must check the subfloor's readiness for installation before installing the flooring and raise any concerns.

Subfloor requirements: Wood Subfloor

At a minimum the wood subfloor must be: 5/8" (16mm) thick for joists spaced up to 16" OC Or 3/4" (19mm) thick for joists spaced up to 19" OC. Sheeted with exterior grade APA rated T&G plywood or flooring grade T&G OSB. Fastened to a joist system designed to support the weight of the flooring being installed. Sheet seams sanded flush with adjacent panels. Have a moisture content less than 12%. A wood floor must be suspended at least 18" (457mm) above the ground. Adequate cross-ventilation is required, thus wood subfloor installed directly overtop of concrete is not permitted.

A layer of underlayment grade (CANPLY/APA rated) plywood must be fastened ontop of the subfloor, with the underlayment sheets installed perpendicular to the subfloor sheets, fastened according to local building regulations. The underlayment panels must have a sanded face and sanded seams which are flush with adjacent panels, with a deflection that does not exceed L/360. Screw / Staple / Nail holes, and imperfections in the underlayment must be “patched” with a suitable patching compound applied in according to patching manufacturer's requirements, to create a flat, perfect subfloor surface to avoid telegraphing of surface imperfections. Claims of telegraphing is not the responsibility of the flooring manufacturer, but that of the flooring installer who improperly prepared the subfloor.

Fix floor squeaks PRIOR to installing flooring.

PURLINE organic flooring | wineo 1200

Installation instructions plank for gluing



Substrates Concrete subfloor:

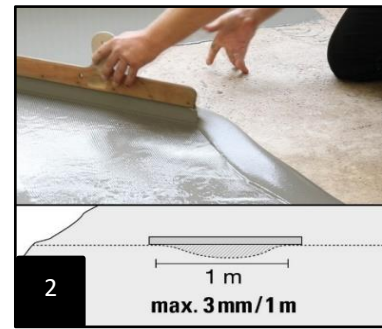
Must be permanently dry. Concrete must have a minimum compressive strength of 3500 psi. Moisture vapor transmission levels must not exceed 5lbs / 1000sqft / 24 hours (2.3kg / 92.9m² / 24hours) per ASTM F-1869. A moisture test indicates the conditions only at the time the test is performed, you must take into consideration and allow for changes in season and environmental conditions will produce results which differ. Prepare / repair all cracks prior to installation.

Saw cuts / expansion joints in the concrete must be honoured

When gluing **wineo 1200 plank** to underfloor heating systems, EN 1264-2 (Room surface integrated heating and cooling systems with water flow part 2) must be taken into account. The surface temperature should not exceed 27°C permanently.

For the installation you will need the following tools (1):

1. pencil
2. scale rule/tape measure
3. dolphin knife with hook and trapezoid blade
4. chalk line
5. trowel A2 notch OR 1/16x1/16x1/16" v-notch
6. linocut
7. hand pressure roller
8. pressure board
9. segmented roller min. 50 KG (110lbs)



Acclimatization:

wineo 1200 plank for gluing as well as all required auxiliary materials must be acclimatized in small stacks (3) in the rooms to be installed for at least 24 hours before installation under the following conditions!



Room climatic conditions:

- Room air temperature > 18°C (but not more than 26°C).
- Floor temperature > 15°C (but not more than 22°C)
- Relative humidity < 65%

It must be ensured that constant room climatic conditions exist during the acclimatization as well as the setting phase of the adhesive. The above-mentioned room climate must be maintained for at least 72 hours before, during and after bonding of the covering.

PURLINE organic flooring | wineo 1200

Installation instructions plank for gluing

wineo
THAT'S FLOORING

Installation:

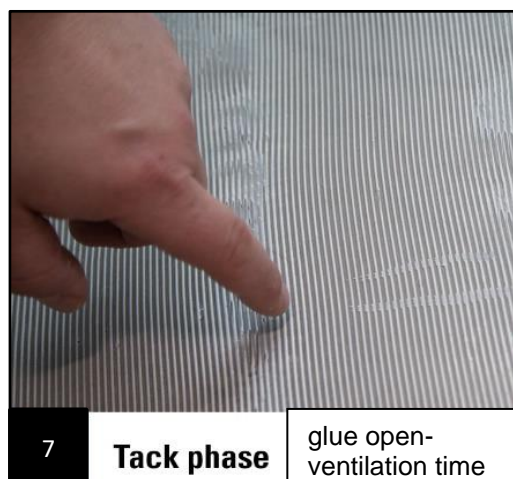
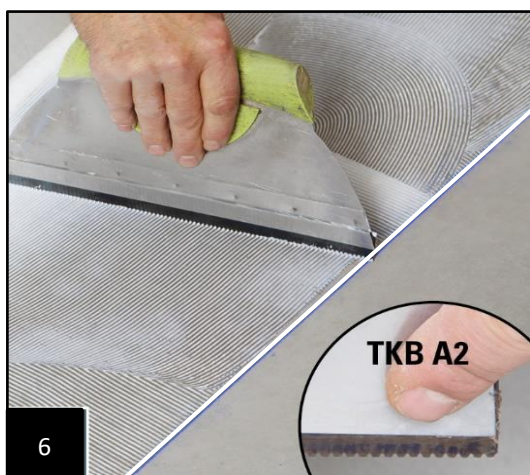
In order to achieve an optimal installation result with as little material waste as possible, we recommend measuring the area to be covered and dividing it according to the material format and installation pattern (4). We recommend that you transfer the dimensions of the first three panel rows, including the edge distance, to the subfloor by means of a chalk line (5).



PURLINE organic flooring wineo 1200 plank for gluing may NOT be installed with a pressure sensitive adhesive. PURLINE organic flooring wineo 1200 plank for gluing must only be installed using an approved wet set adhesive installed using a wet set installation method as described by the adhesive manufacturer. A wet set installation method allows the adhesive to physically transfer to the fleece underside of the flooring.

Now apply the adhesive (6) approved by Windmüller GmbH evenly according to the adhesive manufacturer's instructions using the notched trowel recommended for this purpose (usually TKB A2 or 1/16x1/16x1/16" v-notch trowel). Confirm with adhesive manufacturer the trowel notch size & shape, as the substrate material, porosity and texture may affect the selection of trowel notch size / shape. We recommend the use of low-emission and solvent-free dispersion adhesives, e.g. EC1 or RAL (Blue Angel). For more information, please refer to our adhesive recommendation. The processing guidelines of the adhesive manufacturers must be observed.

The adhesive may require a "ventilation time" according to the adhesive manufacturer's instructions, taking into account the room climate conditions. Now place the flooring in the wet adhesive bed (7).
(Attention: pressure sensitive installation is not permitted).

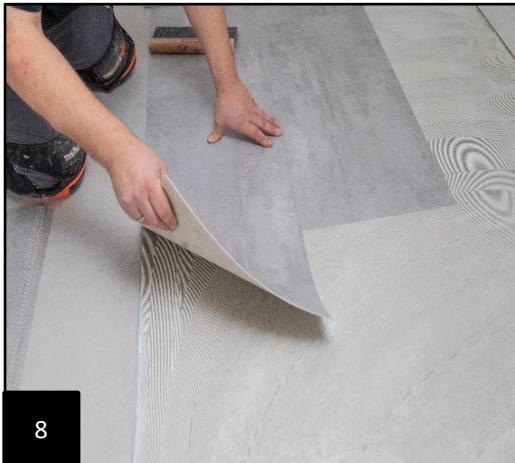


PURLINE organic flooring | wineo 1200

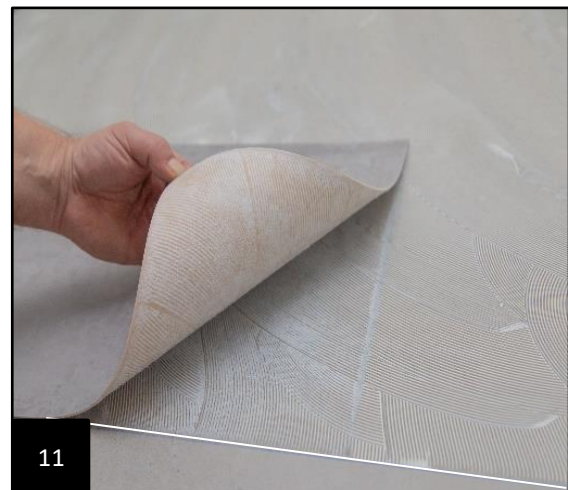
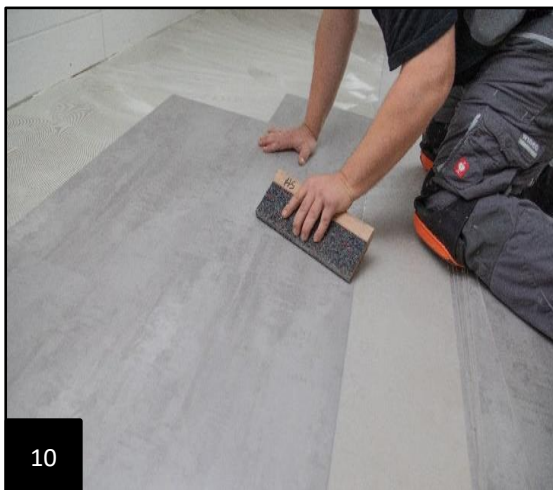
Installation instructions plank for gluing



The individual PURLINE planks/tiles must be laid in the adhesive bed in a joint-tight and tension-free manner (8). In order to achieve a visually appealing installation pattern, we recommend ensuring sufficient joint offset (approx. 30 cm for plank formats) (9).



The flooring is then pressed down over the entire surface with a suitable pressing tool, such as a hand-operated pressure roller or a pressure board (10) is recommended for this purpose. In order to achieve an ideal installation and utilization result, it is important to ensure good adhesive transfer (11) on the backside of the flooring which can be verified by lifting a plank to confirm adhesive transfer.



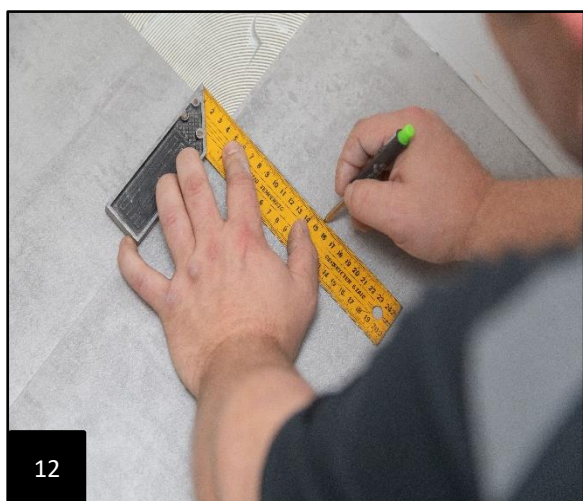
PURLINE organic flooring | wineo 1200

Installation instructions plank for gluing

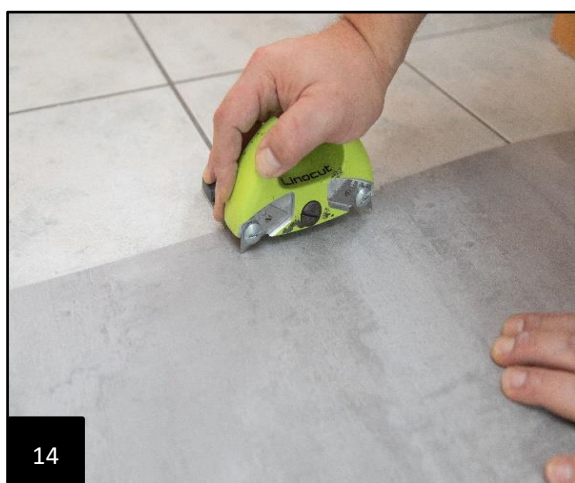
wineo

THAT'S FLOORING

Now mark the element to be used (12) and cut it to fit exactly so that the edge joints (13) remain open to perimeter foam insulation strips if installed. It can be fitted tight but with no tension around door frames etc.



To achieve a clean and even transition to existing/adjacent floor coverings, we recommend the use of seam cutting tools such as the Wolff Linocut (14/15).

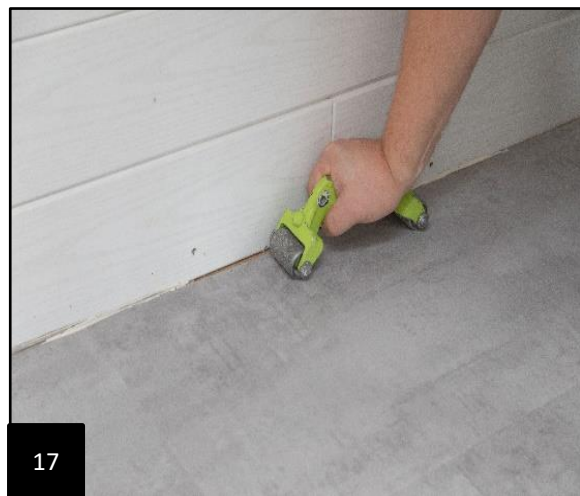
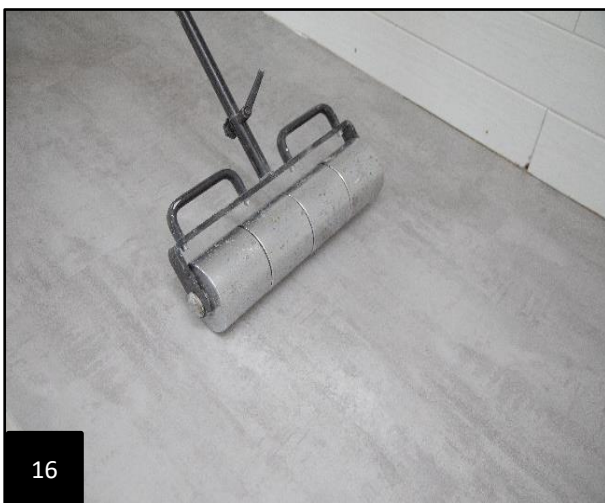


PURLINE organic flooring | wineo 1200 Installation instructions plank for gluing



Once the floor has been completely laid (16) the flooring it must be rolled evenly and slowly using a flooring roller (weight min. 50 kg / 110lbs). A hand pressure roller (17) is recommended for the inaccessible area of the sectional roller, especially in the edge area.

Take care that the flooring roller is clean and smooth, so it does not damage the flooring during rolling.



The installed surface should not be put into operation/loaded until the adhesive has set completely (follow the adhesive manufacturer's instructions). Please note that the contractor has a maintenance obligation (protection of the floor covering against damage by subsequent trades) for a completed but not yet accepted trade. Please use only vapor-open covering material. Partial acceptance transfers the maintenance obligation for the accepted areas to the client.

Cleaning and care:

Please refer to our detailed cleaning and detergent recommendation at www.wineo.de!

With the publication of these installation instructions (as of 07/2021), all previous versions lose their validity.